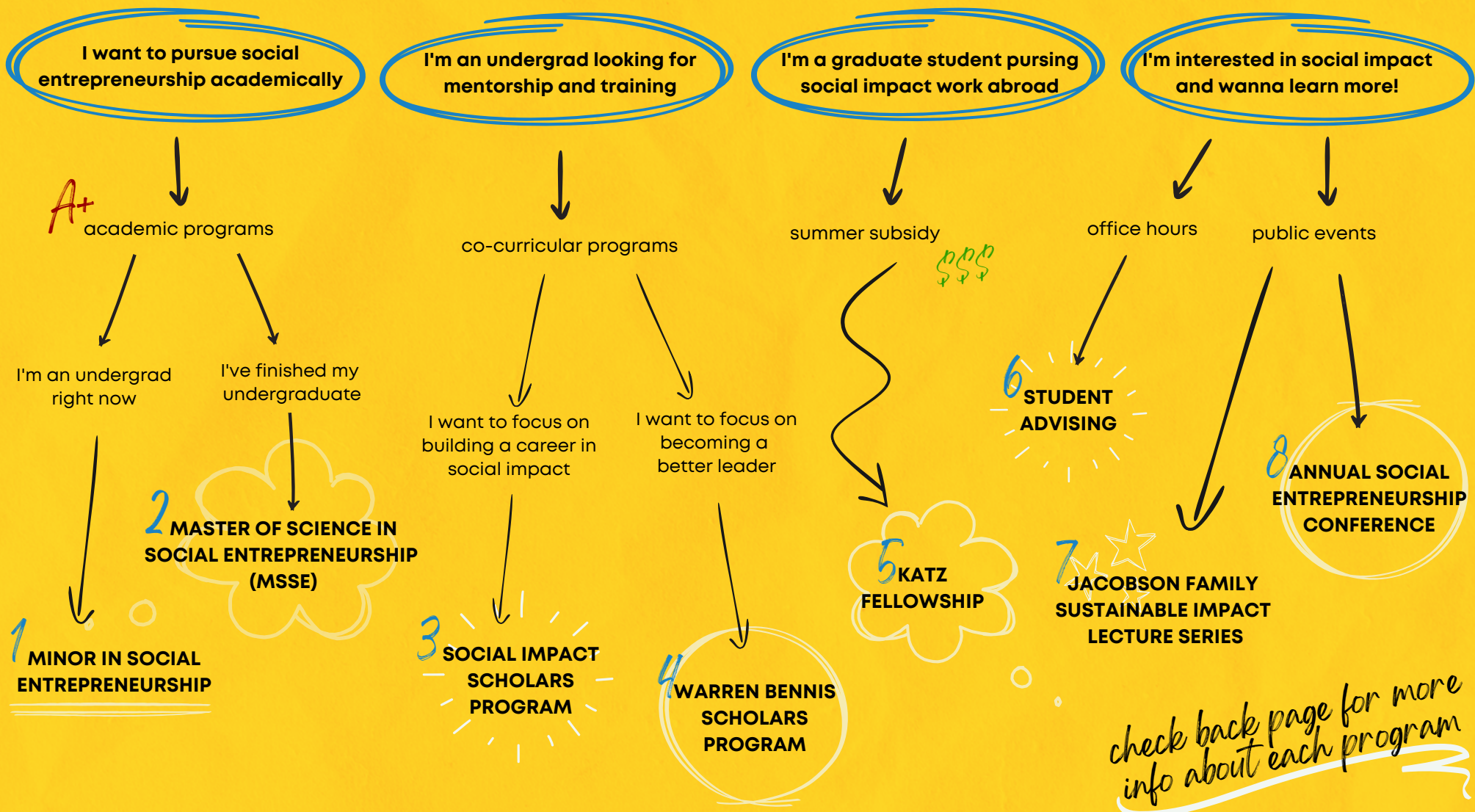


Social Impact @ USC Brittingham Social Enterprise Lab

Which BSEL Program is for *you*?



Academic Programs

- 1 MINOR IN SOCIAL ENTREPRENEURSHIP**
Open to all majors, the social entrepreneurship minor provides a foundation in the context and practice of social entrepreneurship, as well as an understanding of its relationship to government and public policy. Students also learn management skills specific to starting and maintaining a social enterprise.
- 2 MASTER OF SCIENCE IN SOCIAL ENTREPRENEURSHIP (MSSE)**
The Master of Science in Social Entrepreneurship is a business degree with a social conscience. The MSSE program gives students the opportunity to learn business and entrepreneurship skills within a framework of combining both financial and social missions. It is the *first program of its kind at a U.S. business school.*

Co-Curricular Programs

- 3 SOCIAL IMPACT SCHOLARS PROGRAM**
This year-long mentoring and skills-building experience is designed for juniors and seniors committed to pursuing social impact careers. BSEL scholars receive mentorship from a leading social impact professional, access to the BSEL student and professional network, invitations to exclusive networking opportunities and more.
- 4 WARREN BENNIS SCHOLARS PROGRAM**
The Warren Bennis Scholars Program is a university-wide initiative offered by the USC Office of Provost in partnership with the BSEL. Each year, 20 students across academic disciplines are selected at the end of their sophomore year to participate in the two year leadership program. Bennis Scholars receive intensive leadership training through an honors colloquium (1 unit course each semester for 4 semesters) and a variety of activities designed to develop lifelong commitment to community service. The application cycle begins in January.

Public Events

- 7 JACOBSON FAMILY SUSTAINABLE IMPACT LECTURE SERIES**
Throughout the academic year, the Brittingham Social Enterprise Lab hosts a series of free one-hour panel discussions featuring social impact leaders. Speakers share their experiences working as intrapreneurs and entrepreneurs, with a closing Q&A session with the audience. In past lectures, we delved into topics such as homelessness, food insecurity, sustainability and more.
- 8 ANNUAL SOCIAL ENTREPRENEURSHIP CONFERENCE**
The Annual Social Entrepreneurship Conference brings together scholars, researchers, students and practitioners from around the world to discuss emerging concepts and explore topics in social entrepreneurship, social enterprise, social innovation, sustainability and impact. The conference, *the largest academic gathering of its kind in terms of research paper submissions*, is dedicated to the ongoing development of theory and research on social entrepreneurship and its impact on global communities.

Summer Subsidy

- 5 KATZ FELLOWSHIP**
Katz Fellowship is a summer subsidy awarded to graduate business students pursuing social impact work outside of the United States.

Office Hours

- 6 STUDENT ADVISING**
Our team includes renowned professors on social enterprise and award-winning social entrepreneurs, including a new Social Entrepreneur in Residence each year. Grab some time with our team during their office hours for one-on-one coaching sessions and learn more about how to make a career in social impact.

STAY CONNECTED WITH US...

click or scan



ON INSTAGRAM



ON LINKEDIN

QUESTIONS? EMAIL US AT BRITTINGHAMLAB@MARSHALL.USC.EDU